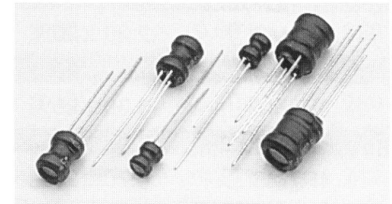


Radial Choke Coils Inductor Common Series



How to order DR3W, DR4W, DR5W TYPE (共模型工字電感器)

| | | | | | | | |
|----------|---|--------------------------------------|---|--|---------------------|------|------|
| L | DR3W 0810 | A | 100A | 220B | 330C | 470D | 101E |
| Inductor | | | | | | | |
| | TYPE | COMMON | Inductance (μH) | | CURRENT (mA) | | |
| | DR3W 4.5X5.5=4555 DR3W 5.0X7.0=0507 DR3W 6.0X8.3=0683 DR3W 8.0X10 =0810 DR3W 14 X15 =1415 DR3W 16 X18 =1618 DR4W 4.5X5.0=4505 DR4W 6.0X8.3=0683 DR4W 8.0X10 =0810 DR4W 9.0X12 =0912 DR4W 10 X16 =1016 DR4W 14 X15 =1415 DR4W 16 X20 =1620 DR5W 9.0X12 =0912 DR5W 14 X15 =1415 | A=2com B=3com C=4com D=5com | 1R0=1 2R2=2.2 100=10 220=22 101=100 | A=50 L=600 B=100 M=700 C=150 N=800 D=200 P=900 E=250 Q=1000 F=300 R=1200 G=350 S=1500 H=400 T=2000 I=450 U=2500 J=500 V=3000 K=550 | | | |



- If the COMMON is A, there are 2 groups following, such as A 100A 220B.
- If the COMMON is B, there are 3 groups following, such as B 100A 220B 330C.
- If the COMMON is C, there are 4 groups following, such as C 100A 220B 330C 470D.
- If the COMMON is D, there are 5 groups following, such as D 100A 220B 330C 470D 101E.
- The series are designed according to the requirements of customers.

Shapes

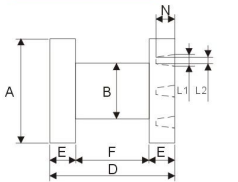


Fig 1 DR3W

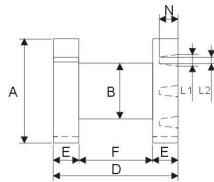


Fig 2 DR3W

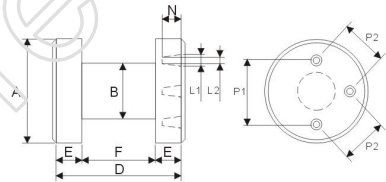


Fig 3 DR3W

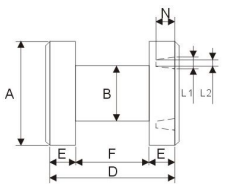


Fig 4 DR4W

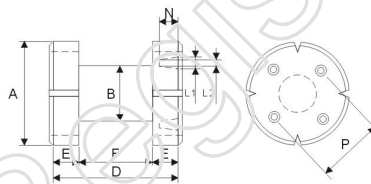


Fig 5 DR4W

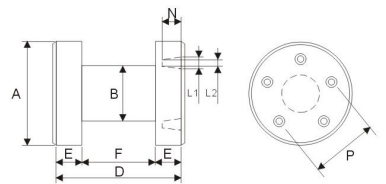


Fig 6 DR5W

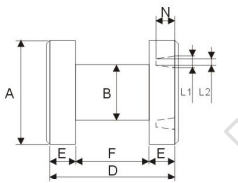


Fig 7 DR5W

| CORES. | FIG | DIMENSIONS(mm) | | | | | |
|--------------|-----|----------------|-------------|-------------|------------|-------------|--------------|
| | | A | B | D | E | F | P |
| DR3W 4.5X5.5 | 2 | 4.50 ±0.20 | 2.00 ±0.10 | 5.50 ±0.20 | 1.60 ±0.10 | 2.30 ±0.15 | 2 |
| DR3W 5X7 | 1 | 5.00 ±0.20 | 2.00 ±0.10 | 7.00 ±0.20 | 2.00 ±0.10 | 3.00 ±0.15 | 2.15 |
| DR3W 6X8.3 | 2 | 6.00 ±0.20 | 2.50 ±0.10 | 8.30 ±0.20 | 2.15 ±0.15 | 4.00 ±0.20 | 2.25 |
| DR3W 8X10 | 2 | 8.00 ±0.20 | 3.50 ±0.15 | 10.00 ±0.30 | 2.25 ±0.15 | 5.50 ±0.20 | 4 |
| DR3W 14X15 | 3 | 14.00 ±0.30 | 7.00 ±0.20 | 15.00 ±0.30 | 3.00 ±0.15 | 9.00 ±0.20 | P1=10/P2=7.5 |
| DR3W 16X18 | 3 | 16.00 ±0.30 | 10.00 ±0.20 | 18.00 ±0.30 | 2.50 ±0.15 | 13.00 ±0.20 | P1=10/P2=5 |
| DR4W 4.5X5 | 5 | 4.50 ±0.20 | 2.10 ±0.10 | 5.00 ±0.20 | 1.40 ±0.10 | 2.20 ±0.10 | 3 |
| DR4W 6X8.3 | 5 | 6.00 ±0.20 | 2.80 ±0.15 | 8.30 ±0.20 | 2.15 ±0.15 | 4.00 ±0.15 | 3 |
| DR4W 8X10 | 5 | 8.00 ±0.20 | 3.50 ±0.15 | 10.00 ±0.30 | 2.25 ±0.15 | 5.50 ±0.15 | 4 |
| DR4W 9X12 | 4 | 9.00 ±0.20 | 4.00 ±0.20 | 12.00 ±0.30 | 2.00 ±0.15 | 7.00 ±0.15 | 5 |
| DR4W 10X16 | 4 | 10.00 ±0.30 | 5.00 ±0.20 | 16.00 ±0.30 | 3.00 ±0.15 | 10.00 ±0.15 | 7 |
| DR4W 14X15 | 4 | 14.00 ±0.30 | 8.00 ±0.20 | 15.00 ±0.30 | 3.00 ±0.15 | 9.00 ±0.15 | 10 |
| DR4W 16X20 | 5 | 16.00 ±0.30 | 9.20 ±0.20 | 20.00 ±0.40 | 3.50 ±0.15 | 13.00 ±0.15 | 9.9 |
| DR5W 9X12 | 6 | 9.00 ±0.20 | 4.00 ±0.20 | 12.00 ±0.30 | 2.00 ±0.15 | 7.00 ±0.15 | 6 |
| DR5W 14X15 | 7 | 14.00 ±0.30 | 8.00 ±0.20 | 15.00 ±0.30 | 3.00 ±0.15 | 9.00 ±0.15 | 10.5 |